

CHARGE THE WORLD WITH ELECTRICITY,
MAKING THE FUTURE MORE BEAUTIFUL.



PV+ESS & SMART MICROGRID SOLUTION

Wuhan Sanfran Xiangming New
Energy Technology Co.,Ltd



WeChat Official Account

Wuhan Sanfran Xiangming New Energy Technology Co.,Ltd

Address: Factory No. 2, Dongqiangfa Plot, Sunshine Avenue, Miaoshan
Development Zone, Jiangxia District, Wuhan City, Hubei Province.

Tel: 027-8130 0229

Web: www.shinempower.com

Email: postmaster@shinempower.com

Charge the world with electricity
making the future more beautiful



BECOME THE MOST TRUSTED SMART MICROGRID SERVICE PROVIDER IN THE GLOBAL ENERGY TRANSITION

Core values

Balancing personal and public interests, Co-creation and Co-sharing, Constantly striving for great products, seeking the truth and doing practical work.

Mission

Charge the world with electricity, making the future more beautiful.

Concept

Serve customers wholeheartedly.

Vision

To become the most trustworthy intelligent micro network service provider in the energy transition.

XIANGMING

ABOUT US

Wuhan Sanfran Xiangming New Energy Technology Co., Ltd.(Here in after referred to as Xiangming) , a subsidiary of Wuhan Sanfran Electronics Co., Ltd., carries out the Sanfran Group' s strategic mission in the new energy sector. Backed by over 20 years of expertise in the power industry, Xiangming focuses on the research, development, and application of advanced energy storage and smart microgrid technologies.

Since its establishment in 2017, Xiangming has built a comprehensive value chain covering R&D, intelligent manufacturing, system integration, and operational services, dedicated to providing efficient, safe, and intelligent energy solutions worldwide.

Driven by technological innovation, Xiangming has formed a high-caliber R&D team and achieved breakthroughs in integrated photovoltaic and energy storage systems, addressing key gaps in the industry. Its product portfolio includes energy storage battery systems, energy management platforms, microgrid control systems, energy storage inverters, and solar photovoltaic modules, serving applications in residential energy storage, solar power plants, transportation, communications, and EV charging.

With business operations across more than 60 countries and regions, Xiangming delivers reliable, high-performance solutions for diverse energy needs. Through superior product quality, cutting-edge technologies, and professional service, the company has established itself as a leader in photovoltaic power generation, energy storage integration, and smart microgrid solutions, promoting global clean energy development from households to industry.



GLOBAL LAYOUT MAP

- Xiangming Sanfran New Energy has its products accessible to more than 60 clients across the globe. It has established independent overseas offices in key regions, taking full charge of sales, warehousing and after-sales services.
- Each service team is equipped with professional technical support personnel to ensure prompt responses to customer inquiries and provide localized services.
- A 24/7 after-sales service hotline is available. Upon receiving service requests, we commit to responding within 0.5 hours, dispatching personnel to designated locations within 8 hours, and submitting tailored solutions within two business days.

QUALIFICATIONS AND STRENGTH

We have an industry-leading reliability lab. Our test system exceeds international standards. It conducts full life-cycle safety and stability verification for all our power equipment products. We perform stringent tests like environmental adaptability, electrical safety, and long-term aging. This ensures our devices operate efficiently in extreme environments. The lab is CNAS accredited.



Xiangming Sanfran New Energy's products are available in over **60** countries worldwide.



24 hour

24-hour after-sales service hotline

0.5 hour

Provide a response within 0.5 hours

8 hour

Provide services at the designated location within 8 hours

2 days

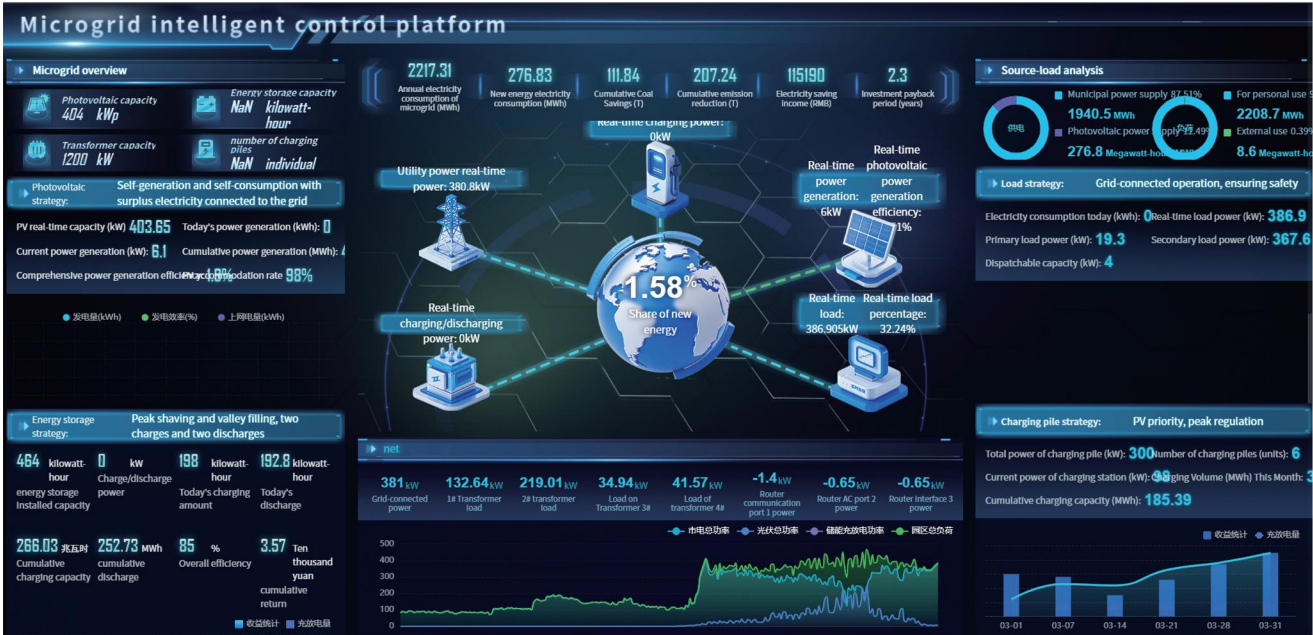
Submit a processing plan within two working days



MICROGRID SOLUTIONS

Core Functions

- Microgrid Cockpit
- Energy Supply
- Load Management
- Security Management
- Smart Operation



Value Proposition

- Enhances grid resilience to address the intermittency and volatility challenges of renewable energy.
- Improves energy efficiency and reduces operational costs.
- Supports dynamic balance and smart interaction to promote green and low-carbon transformation.
- Delivers an integrated solution applicable to diverse application scenarios.

CLOUD PLATFORM

EMS Cloud Platform

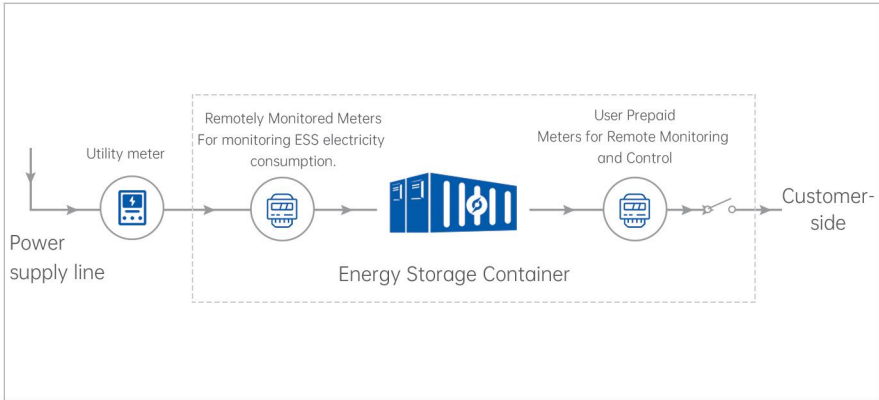
Remote Monitoring for Energy Storage Systems

The Energy Storage EMS (Energy Management System) is an intelligent management system designed for energy storage power stations, enabling comprehensive monitoring, control, and management. Leveraging IoT, data acquisition, and data analysis technologies, it provides real-time monitoring of energy storage, charging, and discharging status. Based on factors such as load demand and electricity prices, it intelligently regulates charging and discharging processes to improve energy efficiency and operational management.



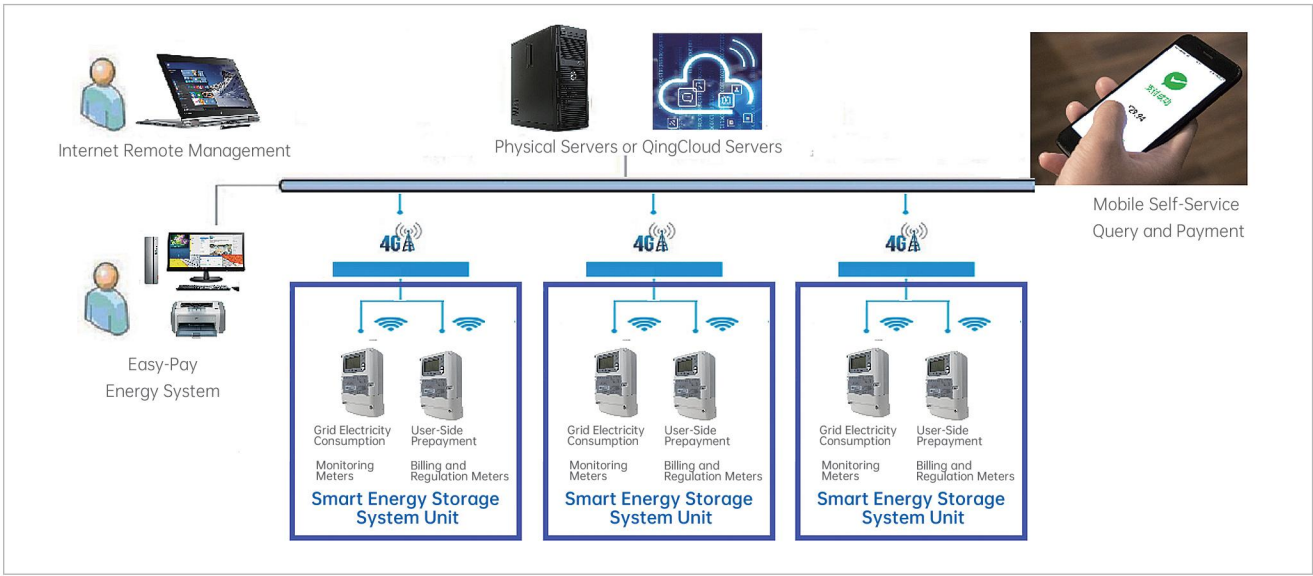
XIANGMING SMART ENERGY CHARGING AND BILLING SYSTEM

Top Advantages



- Pricing Strategy, Convenient Payment
- Smart Metering, Real-Time Control
- Dual-Mode Power Usage, Flexible Adaptation
- No Fear of Islanding, Strong Grid Adaptability
- Cloud Platform, Unified Management

Highlight Features

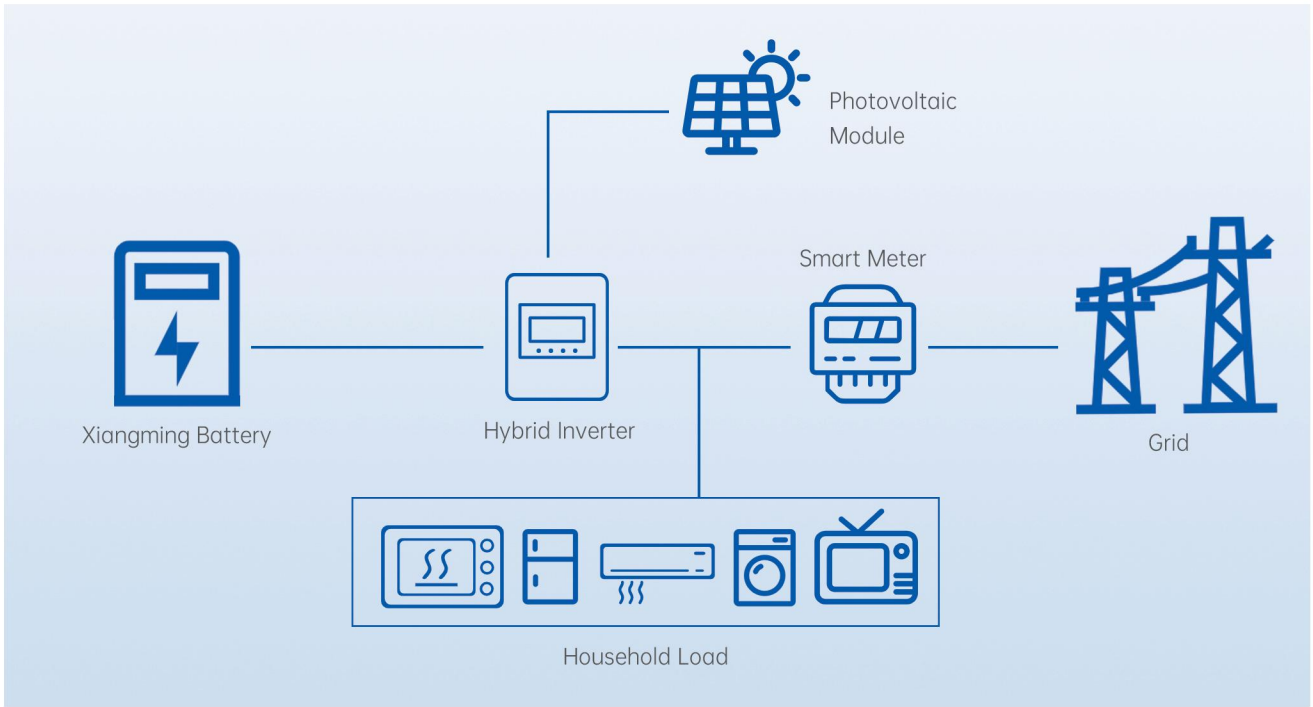


- Localized Payment Integration
- Low-Cost Server Solutions
- Secure & Reliable, Tamper and Attack Resistant
- One Device, One Code - Scan to Pay

Smart Electricity Usage, Effortless Management
—Making Energy Use More Transparent and Controllable!

HOME STORAGE SOLUTION

Home storage refers to the installation of a system with energy storage batteries as the core in residential buildings for storing electric energy and intelligent collaborative management with home energy (such as photovoltaic solar energy) and power grids. Its essence is to build a micro, intelligent, independent home energy network.



Customer value

- ◆ Use photovoltaics to generate electricity during the day, give priority to household use, and store excess electric energy in batteries to avoid waste.
- ◆ Switch to energy storage power supply at night or during peak electricity price hours, and the cost of purchasing electricity from the grid.

Solution Advantages



According to the electricity demand of households or merchants, the energy storage capacity can be flexibly stored to support future expansion.



Compatible with mainstream photovoltaic inverters, easy to adapt to old and new systems.



It can operate off-grid in areas without power grid, and it can be intelligently complemented by diesel generators.

HOME STORAGE

Battery Series

- IP20/IP54
- All new grade A cell LFP battery
- 6000 cycle life
- Supports parallel use of ≤15 batteries
- High class of safety with built-in BMS protection



CE UL FC UN38.3 MSDS



Long Life



Easy Mounting



Space Saving



Home Appliance Style



Product Parameter

Model	SMP-AU008	SMP-AU004	SMP-AU005	SMP-AU006	SMP-AU011
Battery					
Standard Voltage	25.6V	51.2V			
Voltage Range	21.6V ~ 28.8V	43.2~57.6V			
Norminal Capacity	100Ah	100Ah	150Ah	200Ah	314Ah
Rated Energy	2.56kWh	5.12kWh	7.68kWh	10.24kWh	16.07kWh
Communication	CAN / RS485 / RS232 / WIFI /Bluetooth				
Cell Self-Discharge	<5 % / Month				
Modules Connection	1~ 15 in Parallel				
Cycle Life	≥6000 @ 25℃, 80% DOD				
Max Charge&Discharge Current	100A				200A
IP Rating	IP20(IP54)				
Installation	Wall				
Working Temperature	0~55℃				
Storage Temperature	-20~55℃				
Humidity	≤80%				
Product Dimension	426*378*160 mm	426*590*160 mm	705*530*247 mm	576*820*200 mm	530*790*240 mm
Package Dimension	475*500*285 mm	505*690*285 mm	770*630*325 mm	655*920*440 mm	630*900*510 mm
Net Weight	26kg	45kg	84kg	85kg	117kg
20GP Container	352PCS	256PCS	216PCS	110PCS	90PCS
40HQ Container	736PCS	512PCS	320PCS	220PCS	195PCS

Battery Series

- All new grade A cell LFP battery
- 6000 cycle life
- Supports parallel use of ≤15 batteries
- High class of safety with built-in BMS protection

CE U FC UN38.3 MSDS



- SMP-BU006
- SMP-BU008
- SMP-BU009



Long Life



Mobility



Space Saving



Home Appliance Style



Product Parameter

Model	SMP-BU006	SMP-BU008	SMP-BU009
Battery			
Standard Voltage	51.2V		
Voltage Range	43.2~57.6VDC		
Norminal Capacity	314Ah	350Ah	560Ah
Rated Energy	16.07kWh	17.92kWh	28.672kWh
Communication	CAN / RS485 / RS232 / WIFI / Bluetooth		
Cell Self-Discharge	<5 % / Month		
Modules Connection	1~15 in Parallel		
Cycle Life	≥6000 @ 25℃, 80% DOD		
Max Charge&Discharge Current	200A		
IP Reting	IP20 (IP54)		
Installation	Floor Standing		
Working Temperature	0~55℃		
Storage Temperature	-20~55℃		
Humidity	≤80%		
Product Dimension	850*550*250mm	1000*551*240mm	1106*750*280mm
Package Dimension	1000*630*470mm	1105*655*465mm	1290*850*500mm
Net Weight	125kg	136kg	245kg
20GP Container	72PCS	80PCS	40PCS
40HQ Container	180PCS	170PCS	85PCS

— High Voltage Battery Series

- All new grade A cell LFP battery
- 6000 cycle life
- Supports stacking 8 batteries or 6 batteries High class of
- Safety with built-in BMS protection

CE UL FC UN38.3 MSDS



- SMP-CU001
- SMP-CU002



Long Life



Mobility



Space Saving



Home Appliance Style

■ Product Parameter

Model	SMP-CU001	SMP-CU002
Battery		
Standard Voltage	51.2V	102.4V
Norminal Capacity	100Ah	50Ah
Rated Energy	5.12kWh	
Max Charge-Discharge Rate	1C / 100A	1C / 50A
Product Dimension	550*500*171mm	
Package Dimension	640*590*265mm	
Net Weight	46kg	
Cycle Life	≥6000 @ 25℃, 80% DOD	
Stacking Parameters		
Max Stacking Quantity	8 PCS	6 PCS
Standard Voltage	409.6V	614.4V
Working Voltage	345.6 ~ 460.8V	518.4 ~ 691.2V
Rated Energy	40.96kWh	30.72kWh
Total Product Dimension	550*500*1629mm	550*500*1287mm
Net Weight	360kg	263kg
General Parameters		
IP Rating	IP20	
Installation	Stacked	
Communication	CAN / RS485/WiFi(Optional)	
Working Temperature	0 ~ 55℃	
Storage Temperature	-20 ~ 55℃	
Humidity	≤80%	
20GP Container	216pcs	
40HQ Container	459pcs	

— All in one energy storage system Series

- All new grade A cell LFP battery
- 6000 cycle life
- Supports stacking ≤15 batteries
- High class of safety with built-in BMS protection

CE UN FC UN38.3 MSDS



- SMP-EU101-1
- SMP-EU101-2
- SMP-EU101-3
- SMP-EU101-4
- SMP-EU101-5



Intelligent



Mobility



Space Saving



Home Appliance Style

■ Product Parameter

Model	SMP-EU101-1	SMP-EU101-2	SMP-EU101-3	SMP-EU101-4	SMP-EU101-5
Battery					
Single Module Capacity	5.12kWh				
Module Number	1PCS	2PCS	3PCS	4PCS	5PCS
Total Energy	5.12kWh	10.24kWh	15.36kWh	20.48kWh	25.6kWh
Standard Voltage	51.2V				
Working Voltage Range	43.2V~57.6V				
Standard discharge Current	100A				
Standard Charge Current	50A				
DOD	90%				
Installation	Stacked				
Product Dimension(Module)	550*500*170mm				
Package Dimension(Module)	650*600*270mm				
Net Weight(Module)	46kg				
PV input					
Working Voltage Range	120~500VDC				
MPPT Working Voltage Range	120~450VDC				
Input Power	5500W				
Max Input Current	22A				
AC Output/input					
Max Charging Current	30A				
Rated Input Voltage	220/230/240VAC				
Rated Input Voltage Range	UPS:(170~280)VAC±2%, APL:(90~280)VAC±2%				
Frequency	50Hz/60Hz				
Max Bypass Overload Current	30A				
Rated Output Voltage	220/230/240VAC				
Rated Output Power	5000W				
General Parameters					
Total Product Dimension	550*500*446mm	550*500*616mm	550*500*786mm	550*500*956mm	550*500*1126mm
IP Rating	IP20				
Communication	CAN/RS485/RS232/WIFI (Optional)				
Working Temperature	0~55℃				
Storage Temperature	-20~55℃				
Humidity	≤80%				
20GP Container	BAT *3+INV+Base 57pcs				
40HQ Container	BAT *3+INV+Base 115pcs				

— All in one energy storage system Series

- All new grade A cell LFP battery
- 6000 cycle life
- Supports stacking 15 batteries
- High class of safety with built-in BMS protection

CE UL FC UN38.3 MSDS



- SMP-EU203-2
- SMP-EU203-3
- SMP-EU203-4
- SMP-EU203-5



Intelligent



Mobility



Space Saving



Home Appliance Style

■ Product Parameter

Model	SMP-EU203-2	SMP-EU203-3	SMP-EU203-4	SMP-EU203-5
Battery				
Single Module Capacity	5.12kWh			
Module Number	2PCS	3PCS	4PCS	5PCS
Total Energy	20.48kWh	30.72kWh	40.96kWh	51.2kWh
Standard Voltage	51.2V			
Working Voltage Range	43.2V~57.6V			
Standard discharge Current	100A			
Standard Charge Current	50A			
DOD	90%			
Installation	Stacked			
Product Dimension(Module)	750x700x171mm			
Package Dimension(Module)	860x800x400mm			
Net Weight(Module)	86kg			
PV Input				
Working Voltage Range	100~500VDC			
MPPT Working Voltage Range	125~425VDC			
Input Power	PV1:5500W/PV2:5500W			
Max Input Current	PV1:22A/PV2:22A			
AC Output/input				
Max Charging Current	50A			
Rated Input Voltage	220/230/240VAC			
Rated Input Voltage Range	90~275VAC			
Frequency	50Hz/60Hz			
Max Bypass Overload Current	50A			
Rated Output Voltage	220/230/240VAC			
Rated Output Power	10000W (Mode batterie)			
General Parameters				
Total Product Dimension	750x700x624mm	750x700x795mm	750x700x966mm	750x700x1137mm
IP rating	IP20			
Communication	CAN/RS485/RS232/WIFI (Optional)			
Working Temperature	0~55℃			
Storage Temperature	-20~55℃			
Humidity	≤80%			
20GP Container	BAT *2+INV+Base 17pcs			
40HQ Container	BAT *2+INV+Base 35pcs			

— All in one energy storage system series

- IP54
- All new grade A cell LFP battery
- 6000 cycle life
- On grid/off grid
- High class of safety with built-in BMS protection

CE UL FC UN38.3 MSDS



- SMP-FU001-2
- SMP-FU001-3
- SMP-FU001-4



IP54



Intelligent



Space Saving



Home Appliance Style

■ Product Parameter

Model	SMP-FU001-2		SMP-FU001-3	SMP-FU001-4
Battery				
Single Module Capacity	5.12kWh			
Standard Voltage	102.4V			
Product Dimenstion	700*235*307mm			
Package Dimenstion	790*325*402mm			
Net Weight	44kg			
Total Product Dimension	700*235*1470mm	700*235*1772mm	700*235*2075mm	
Total Net Weight	132kg	177kg	222kg	
Nominal Voltage	204.8V	307.2V	409.6V	
Rated Energy	10.24kWh	15.36kWh	20.48kWh	
Working Voltage	172.8 ~ 230.4V	259.2 ~ 345.5V	345.6 ~ 460.8V	
Working Temperature	0 ~ 55℃			
Storage Temperature	-20 ~ 55℃			
IP Rating	IP54			
Cooling	Natural			
Communication	CAN/WIFI			
PV input				
Max Power	15000W			
Max Voltage	1000VDC			
MPPT Voltage Range	200 ~ 850VDC			
Max Input Current/Per String	13A/13A			
AC Output/input				
Nominal Power	10000W			
Max Output/Input Current	17A/25A			
Nominal Output/Input	220V/380			

— All In One System series

- All new grade A cell LFP battery
- 6000 cycle life
- Portability
- High class of safety with built-in BMS protection

CE UL FC UN38.3 MSDS



Intelligent



Mobility



Space Saving



Home Appliance Style

■ Product Parameter

Model	SMP-EU105	SMP-EU106	SMP-EU107
Battery			
Type	25.6V100Ah	25.6V200Ah	51.2V100Ah
Rated Voltage	25.6V	25.6V	51.2V
Working Voltage Range	21.6V ~ 28.8V	21.6V ~ 28.8V	43.2V ~ 57.6V
Rated Energy	2.56kWh	5.12kWh	5.12kWh
PV input			
Max PV OCV	160VDC		500VDC
MPPT Voltage Range	30 ~ 128VDC		120 ~ 450VDC
Max Input Power	1600W		6000W
Max Charge-Discharge Current	16A		22A
AC			
Input Voltage	220 ~ 240VAC		
Output Voltage	220/230/240VAC		
Optional Voltage Range	170V ~ 280Vac(UPS)/90V ~ 280Vac(APL)/ 184V ~ 253VAC(VDE)		170V ~ 280Vac(UPS)/ 90V ~ 280VAC(APL)
Input Current	14A		22A
Output Current	14A (Term) /10A (Outlet)		22A(Term)/10A(Outlet)
Frequency	50Hz/60Hz		50Hz/60Hz
Rated Output Power	3000W		5000W
General Parameters			
Communication	RS485/WIFI		
Working Altitude	≤2000m		
Cooling	Natural		
Installation	Floor Standing		
IP Rating	IP20		
Cycle Life	≥6000 @ 25℃, 80% DOD		
Working Temperature	0 ~ 55℃		
Storage Temperature	-20 ~ 55℃		
Humidity	≤80%		
Product Dimension	450*671*350mm		
Package Dimension	550*770*570mm		
Net Weight	40kg	56kg	63kg
20GP Container	112PCS		
40HQ Container	224PCS		

— All in One System series

- All new grade A cell LFP battery
- 6000 cycle life
- Portable power supply
- High class of safety with built-in BMS protection

CE UL FC UN38.3 MSDS



• SMP-GU001



Safe



Environmental
Friendly



Intelligent



Multi Scenarios

■ Product Parameter

Model	SMP-GU001
Battery	
Type	25.6V100Ah
Rated Voltage	25.6V
Working Voltage Range	21.6V ~ 29.2V
Rated Energy	2.56kWh
PV Input	
Max PV OCV	160VDC
MPPT Voltage Range	30 ~ 128VDC
Max Input Power	1600W
Max Charge-Discharge Current	50A
AC	
Input/Output Voltage	220 ~ 240VAC
Optional Voltage Range	170V ~ 280VAC(UPS)/90V ~ 280VAC(APL)/184V ~ 253VAC(VDE)
Input Current	10A
Output Current	10A (Outlet)
Frequency	50Hz/60Hz
Rated Output Power	3000W
General Parameters	
Communication	RS485/WIFI
Working Altitude	≤2000m
Cooling	Natural
Installation	Floor Standing
IP Rating	IP20
Cycle Life	≥6000 @ 25°C, 80% DOD
Working Temperature	0 ~ 55°C
Storage Temperature	-20 ~ 55°C
Humidity	≤80%
Product Dimension	462*416*452mm
Package Dimension	555*507*575mm
Net Weight	34kg
20GP Container	176PCS
40HQ Container	352PCS

Battery Series

- All new grade A cell LFP battery
- 6000 cycle life
- Supports parallel use of 15 batteries
- High class of safty with built-in BMS protection

CE UL FC UN38.3 MSDS



- SMP-LU001
- SMP-LU002
- SMP-LU003
- SMP-LU008



Long Life



Easy Mounting



Independent Maintenance



Good Heat Dissipation

Product Parameter

Model	SMP-LU001	SMP-LU002	SMP-LU003	SMP-LU008
Battery				
Standard Voltage	25.6V	51.2V		
Voltage Range	21.6-28.8V	43.2~57.6V		
Norminal Capacity	100Ah	100Ah	200Ah	314Ah
Rated Energy	2.56kWh	5.12kWh	10.24kWh	14.336kWh
Communication	CAN / RS485 / RS232 / WIFI / Bluetooth			
Cell Self-Discharge	<5 % / Month			
Stacking Parameters				
Modules Connection	1 ~ 15 in Parallel			
DOD	90%			
Cycle Life	≥6000 @ 25℃, 80% DOD			
Max Charge&Discharge Current	100A			200A
Product Dimension	282*484*165mm	460*484*165mm	811*564*165mm	484*750*240mm
Package Dimension	400*540*280mm	535*535*260mm	900*620*385mm	547*875*450mm
Net Weight	22kg	41kg	85kg	106kg
General Parameters				
IP Rating	IP20			
Installation	Cabinet or Wall			
Working Temperature	0~55℃			
Storage Temperature	-20~55℃			
Humidity	≤80%			
20GP Container	450PCS	360PCS	108PCS	140PCS
40HQ Container	900PCS	570PCS	216PCS	205PCS

Battery Series

- IP65
- All new grade A cell LFP battery
- 6000 cycle life
- Supports concatenation to 48/51.2v
- High class of safety with built-in BMS protection

CE UL FC UN38.3 MSDS

- SMP-HU001
- SMP-HU002
- SMP-HU003
- SMP-HU004
- SMP-HU005
- SMP-HU006



Long Life



Multi Scenarios



light Weight



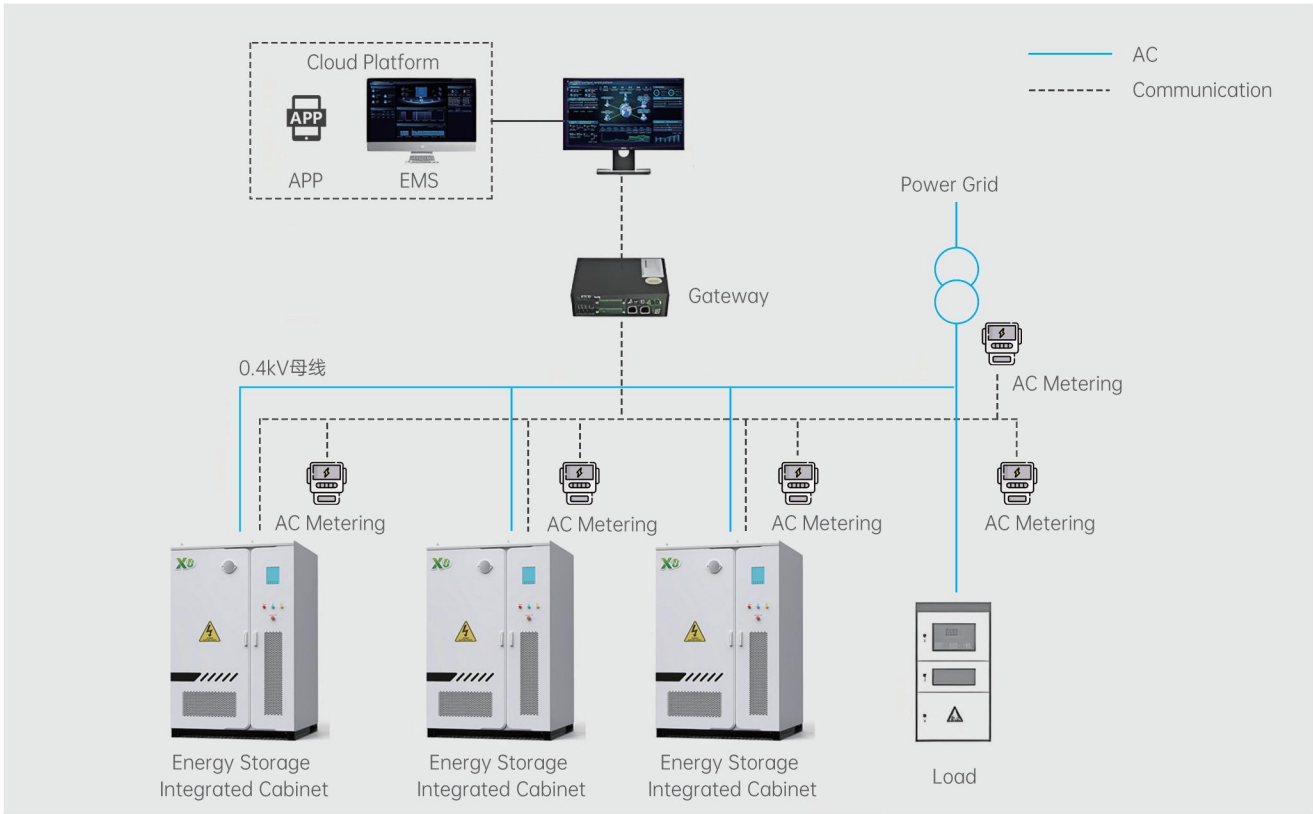
IP65



Product Parameter

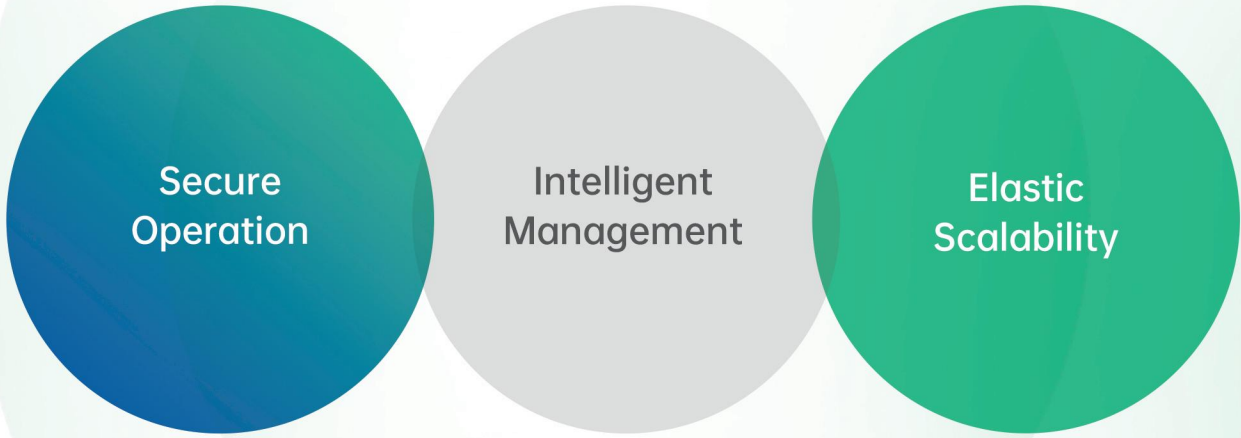
Model	SMP-HU001	SMP-HU002	SMP-HU003	SMP-HU004	SMP-HU005	SMP-HU006
Battery						
Standard Voltage	12.8V				25.6V	48V
Norminal Capacity	50Ah	100Ah	150Ah	200Ah	100Ah	100Ah
Rated Energy	0.64kWh	1.28kWh	1.92kWh	2.56kWh	2.56kWh	4.8kWh
Charge-Discharge Current	25A	50A	50A	100A	50A	50A
Working Voltage Range	10.8~14.6V				21.6-29.2V	40.5~54V
Standard Voltage	12.8V				25.6V	48V
Max Charge Voltage	14.6V				29.2V	54.75V
Cycle Life	≥6000 @ 25℃, 80% DOD					
Product Dimension	330*172*215mm	330*172*215mm	520*217*225mm	520*217*225mm	520*217*225mm	520*267*220mm
Package Dimension	380*225*281mm	380*225*281mm	550*247*265mm	550*247*265mm	550*247*265mm	570*317*280mm
Net Weight	4.5kg	10kg	15kg	19kg	19kg	33kg
Working Temperature	0 ~ 50℃					
Storage Temperature	-20 ~ 55℃					
Humidity	≤80%					
IP Rating	IP65					
20GP Container	882PCS	882PCS	470PCS	470PCS	470PCS	470PCS
40HQ Container	1764PCS	1764PCS	1088PCS	1088PCS	1088PCS	702PCS

INDUSTRIAL AND COMMERCIAL ENERGY STORAGE SOLUTIONS



The intelligent energy storage integrated cabinet is a comprehensive energy solution integrating energy storage, intelligent scheduling, and emergency power supply. Through the advanced integrated design of "solar-storage-diesel charging and discharging", the intelligent and optimized management of electric energy is realized, and the core needs such as peak shaving and valley filling, demand management, and emergency power backup in industrial and commercial scenarios are effectively solved.

Core Technology Architecture



Core value

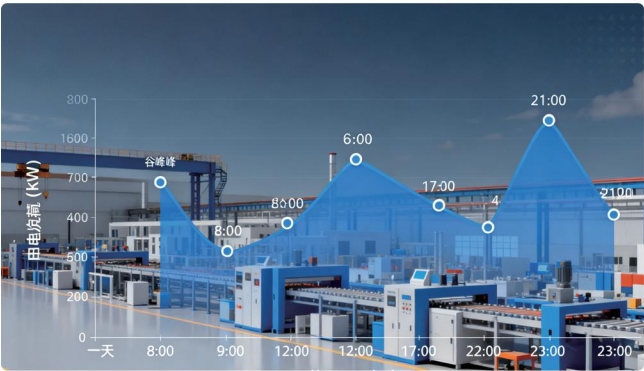
Economic benefit

- Reduce electricity costs by 30% -50% through peak valley arbitrage
- The photovoltaic consumption rate has been increased to over 95%
- Demand management reduces basic electricity expenses

Reliability assurance

- Millisecond level emergency power switching
- Multi level fault isolation protection design
- 24/7 unmanned operation

Application Scenario



Manufacturing peak and valley electricity price management



Backup Power



Solar-storage-charging integrated power station



Micro-grid energy hub

High Voltage Battery series

- All new grade A cell LFP battery
- 6000 cycle life
- This series has shelves to choose
- High class of safety with built-in BMS protection

CE UL FC UN38.3 MSDS



- SMP-MU001
- SMP-MU002
- SMP-MU003



Safe



Easy Mounting



Independent Maintenance



Good Heat Dissipation

Product Parameter

Model	SMP-MU001		SMP-MU002		SMP-MU003
Battery					
Standard Voltage	51.2V		51.2V		102.4V
Norminal Capacity	100Ah		200Ah		50Ah
Rated Energy	5.12kWh		10.24kWh		5.12kWh
Max Charge-Discharge Current	100A		100A		50A
Product Dimenstion	450*565*165 mm		770*565*165mm		421*480*180 mm
Package Dimenstion	560*630*385mm		905*630*385mm		545*510*300 mm
Net Weight	40kg		79kg		41kg
Cycle Life	≥6000 @ 25℃, 80% DOD				
Stacking Parameters					
Max Stacking Quantity	8 PCS	12 PCS	8 PCS	12 PCS	6 PCS
Standard Voltage	409.6V	614.4V	409.6V	614.4V	614.4V
Working Voltage	345.6~460.8V	518.4~691.2V	345.6~460.8V	518.4 ~ 691.2V	518.4 ~ 691.2V
Rated Energy	40.96kWh	61.44kWh	81.92kWh	122.88kWh	30.72kWh
Package Dimension of the Shelf	518*546*1835 mm	518*546*2415 mm	789*626*1729 mm	789*626*2415 mm	518*546*1835 mm
Cabinet Weight	57kg	80kg	73kg	94.5kg	57kg
General Parameters					
IP Rating	IP20				
Installation	Cabinet				
Communication	CAN / RS485/WiFi(Optional)				
Working Temperature	0 ~ 55℃				
Storage Temperature	-20 ~ 55℃				
Humidity	≤80%				
20GP Container	BAT 324/PDU 27PCS		BAT 108/PDU 9PCS		BAT 306PCS/ PDU 51PCS
40HQ Container	BAT 516/PDU 43PCS		BAT 216/PDU 18PCS		BAT 486PCS/ PDU 81PCS

Energy Storage Integrated cabinet Series

- IP54 Can be used outdoors
- All new grade A cell LFP battery
- 6000 cycle life
- On grid/off grid

CE UL FC UN38.3 MSDS

- SMP-NU001
- SMP-NU002
- SMP-NU003
- SMP-NU004



Good Heat
Dissipation



Highly
Integrated



Cost
Effective



Intelligent

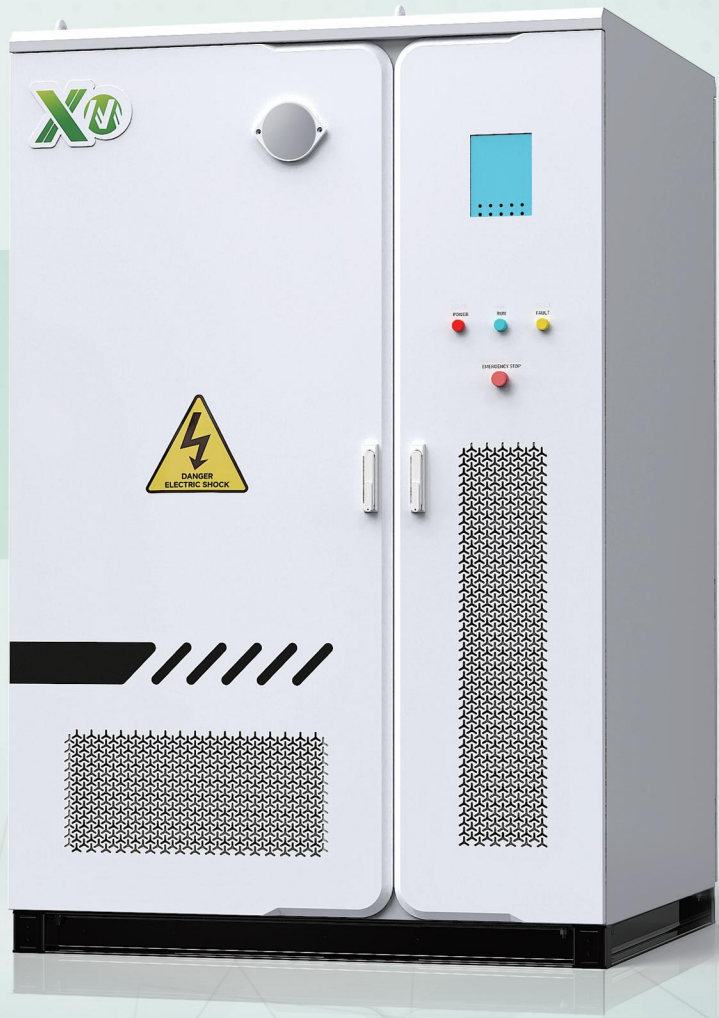
Product Parameter

Model	SMP-NU001	SMP-NU002	SMP-NU003	SMP-NU004			
Battery							
Nominal Voltage		51.2V					
Norminal Capacity	100Ah	200Ah		314Ah			
Rated Energy	5.12KWh	10.24KWh		16.08KWh			
Max. Charge Current	100A	100A		200A			
Product dimensions	484x460x165mm	770x560x165mm		730x477x231mm			
Battery weight	40kg	76kg		109kg			
Cycle Life		> 6000(25℃),80%DOD					
Inverter parameters							
AC Rated Power	18KW	30KW	40KW	50kW			
Max Power	60V	800V	800V	800V			
Start-up Voltage	40~60V	160~800V	160~800V	160~800V			
PV Input Current	160~800V	360~850V	360~850V	450~850V			
Max.PV Input Current	36+20	36+36+36	36+36+36+36	36+36+36+36+			
Stacking parameters							
Maximum Stacking Quantity	6PCS/8PCS	5PCS	6PCS	7PCS	8PCS	7PCS	8PCS
Rated voltage	51.2	256V	307.2V	358.4V	409.6V	358.4V	409.6V
Working Voltage	40~58.4V	200~292V	240~350.4V	280~408.8V	320~467.2V	280~408.8V	320~467.2V
Rated energy	40.96KWh	51.2KWh	61.44KWh	71.68KWh	81.92KWh	112KWh	128KWh
Communication	RS485 ,CAN ,WiFi						
Storage Temperature	-20℃ ~ 55℃ (Recommended)						
Working Humidity	≤95% (RH) No Condensation						
Working Temperature	Charge : 0℃ ~ 55℃ Discharge: -20℃ ~ 55℃						
Working Altitude	≤2000m						
Cooling method	forced air cooling/natural cooling						
Protective Class	IP54						
Dimension	1297x1021x1699mm	1297x1021x1523mm		1297x1021x1866mm		1297x1021x12242.5mm	

Energy Storage Integrated cabinet Series

- IP54 Can be used outdoors
- All new grade A cell LFP battery
- 6000 cycle life
- On grid/off grid
- Real-time remote monitoring
- High class of safety with built-in EMS protection

CE UL FC UN38.3 MSDS RoHS



- SMP-NU006
- SMP-NU007



Good Heat
Dissipation



Highly
Integrated



Cost
Effective

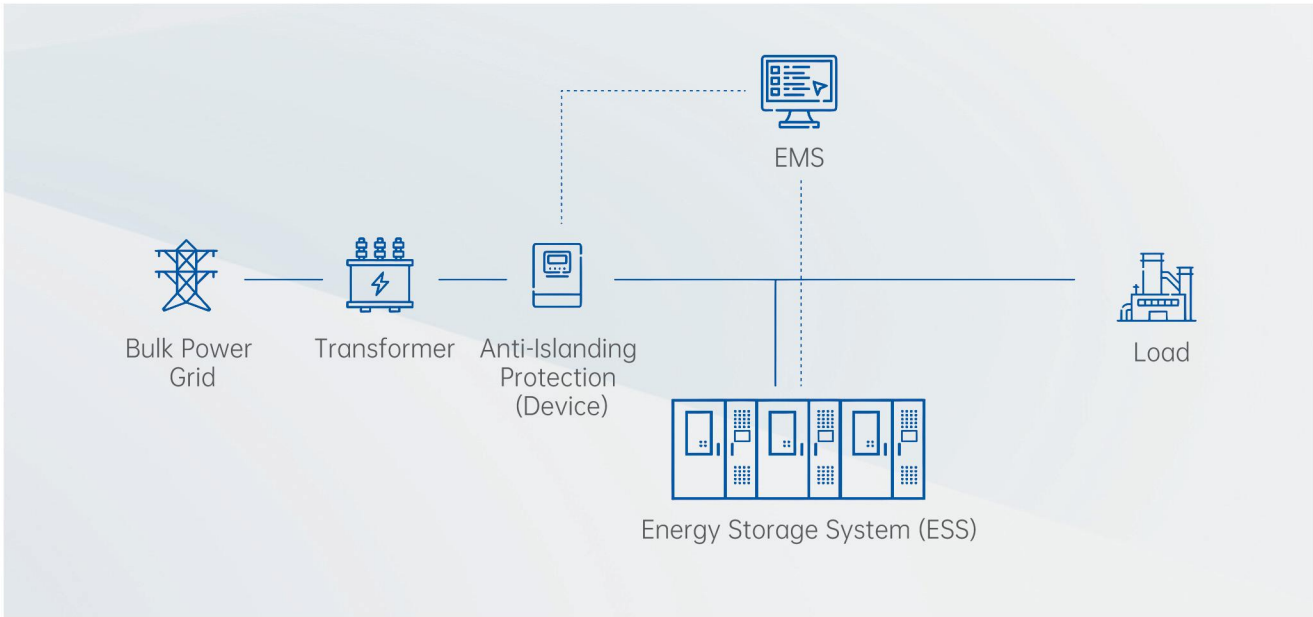


Intelligent

Product Parameter

Model		SMP-NU006		SMP-NU007	
Battery					
Type		768V314Ah		832V314Ah	
Rated Energy		241kWh		261kWh	
Working Voltage Range		600~876V		650~949V	
BMS Communication		Ethernet/RS485/CAN		Ethernet/RS485/CAN	
PCS					
AC Side	AC Rated Power	125kW			
	Max Power	150kW（1min）			
	Max Current	216A			
	Rated Voltage	380V/400V			
	Rated Frequency	50/60Hz			
DC Side	Max Input Voltage	950V		950V	
	Max Current	157A			
MPPT(optional)					
Low Voltage Side	Rated Power	120kW			
	Max Current	60+60A			
	MPPT Voltage Range	200 ~ 950V			
General Parameters					
Product Dimension of the Cabinet		1500*1476*2332mm		1450*1345*2266mm	
IP Rating		IP54			
Working Temperature		-20 ~ 55℃			
Cooling		Air-cooled		Liquid-cooled	
Security Certification		CE/ UN38.3			
Net Weight		2900kg		3300kg	
40HQ Container		8 pcs		8 pcs	

LARGE-SCALE CENTRALIZED ENERGY STORAGE SOLUTIONS



Large-scale centralized energy storage projects aim to store excess energy through centralized energy storage facilities and release it when energy demand peaks to optimize the stability and reliability of energy supply. Such projects generally use large-scale battery systems or other energy storage technologies, combined with renewable energy generation (such as wind energy, solar energy, etc.) to form an effective energy dispatch system. With the global attention to the transformation of energy structure, new energy storage projects are considered to be an important means to improve energy utilization efficiency and promote green and low-carbon strategies.

Customer Value

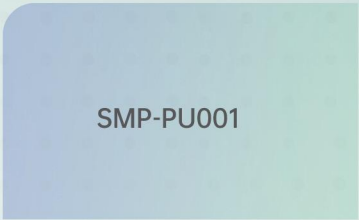
- Significantly Reduce Electricity Costs and Expand Profit Channels
- Enhance Power Stability and Support High Penetration of Renewable Energy Integration
- Improve Energy Efficiency and Facilitate Green Low-Carbon Transition
- Intelligent and Innovative Design for Adaptation to Complex Application Environments

Solution Advantages

- 01** Matrix modularization and 4S integration deliver a 16% reduction in unit cost, peak efficiency of 92%, and MW-to-GWh scalability.
- 02** Liquid cooling maintains <2°C temperature differential, 8000+ cycles, and operation from -20°C to 55°C.
- 03** Millisecond grid response enhances renewable integration for shared storage and wind-solar farms.
- 04** Certified safety with triple-layer protection, thermal runaway prevention, and optimized energy trading.

— Energy Storage Integrated cabinet Series

- IP55 Can be used outdoors
- All new grade A cell LFP battery
- 8000 cycle life
- On grid/off grid
- Real-time remote monitoring



Good Heat
Dissipation



Highly
Integrated



Cost
Effective



Intelligent

■ Product Parameter

Model		SMP-PU001
LFP		
Type		768V314Ah
Rated Energy		1.2MWh
Working Voltage Range		600~876V
BMS Communication		Ethernet/RS485/CAN
PCS		
AC Side	AC Rated Power	500/630kW
	Max Power	600/756kW(1min)
	Rated Voltage	380V/400V
	THDI	≤ 3%
	Power Factor	0.99
	Wiring Method	3L+N+PE
DC Side	Max DC power	500/630kW
	Number of DC circuits	1/2/5/6
	Max Current for each circuit	1151/576/220/193A
	Voltage Stability	≤ ±1%
	Current Stability	≤ ±1%
General Parameters		
Product Dimenstion of the Cabinet		6096*2438*2591mm
Ingress Protection		IP55
Working Temperature		-20 ~ 55℃
Cooling		Air-cooled
Security Certification		CE/ UN38.3
Net Weight		18t

Outdoor Liquid-Cooled Container

- IP54 Can be used outdoors
- All new grade A cell LFP battery
- 8000 cycle life
- On grid/off grid
- Real-time remote monitoring

CE UL FC UN38.3 MSDS

SMP-PU003



Good Heat
Dissipation



Highly
Integrated



Cost
Effective



Intelligent



Product Parameter

Model	SMP-PU003
Battery	
Type	1331.2V314Ah
Rated Energy	5MWh
Battery Cluster	(4*1P104S)*12
Working Voltage Range	1040~1518.4V
BMS Communication	Ethernet/RS485/CAN
Rated Charging & Discharging Power	2500kW/2500kW
General Parameters	
Product Dimenstion of the Cabinet	6058*2438*2896mm
Ingress Protection	IP54
Altitude	≤2000m
Working Temperature	-20 ~ 55℃
Cooling	Liquid Cooling
Security Certification	CE/ UN38.3
Net Weight	42t

PowerCube Industrial & Energy Storage Stabilization System

- IP54 Can be used outdoors
- All new grade A cell LFP battery
- 8000 cycle life
- On grid/off grid
- Real-time remote monitoring

CE UL FC UN38.3 MSDS



- PowerCube-125
- PowerCube-250
- PowerCube-350
- PowerCube-500



Good Heat
Dissipation



Highly
Integrated



Cost
Effective



Intelligent



Product Parameter

Model	PowerCube-125	PowerCube-250	PowerCube-350	PowerCube-500
PERFORMANCE				
Nominal Rated Power	125kVA	250kVA	375kVA	500kVA
Overload Power(5S)	187.5kVA	375kVA	562.5kVA	750kVA
ELECTRICAL				
Input Voltage	380/400V AC ±15%	380/400V AC ±15%	380/400V AC ±15%	380/400V AC ±15%
Output Voltage Range	380/400/415V AC	380/400/415V AC	380/400/415V AC	380/400/415V AC
Frequency	50/60Hz	50/60Hz	50/60Hz	50/60Hz
Power Factor	99%	99%	99%	99%
Power Factor Range	-1~+1	-1~+1	-1~+1	-1~+1
Nominal AC Current	189A	378A	567A	756A
Max AC Current (5S)	283.5A	567A	850.5A	1134A
Nominal Capacity	230kWh	230kWh	460kWh	460kWh
ENVIROMENTAL				
IP Rating	IP54			
Corossion Protection	C5			
Operating temperature	-20~50°C			
Humidity(No condensation)	< 90%			
Maximum Operating Altitude	2000m			
Sound Power Level	65dBa@1m			
CONTROLS				
Protection	Short circuit protection, overvoltage protection, overcurrent protection, emergency stop protection			
Remote Start Generator	YES			
Remote Connectivity	4G,WiFi			
SIZE				
Dimensions(LxWxH)	2338*2200*2200mm	2338*2200*2200mm	3000*2200*2250mm	3000*2200*2250mm
Weight	4880kg	5060kg	7320kg	7450kg

PROJECT APPLICATION CASES



Wuhan Shengfan - 4 Flexible and Rigid Interconnected Network Units with Multi-energy Complementation



China University of Geosciences - 297kWp Photovoltaic Project



Overseas Oilfield - 350kW 460kWh All-in-One Energy Storage Cabinet



Wenshou Shared Energy Storage Power Station - 16MW 32MWh



Intelligent Microgrid - 630kW 1MWh Containerized Energy Storage Product



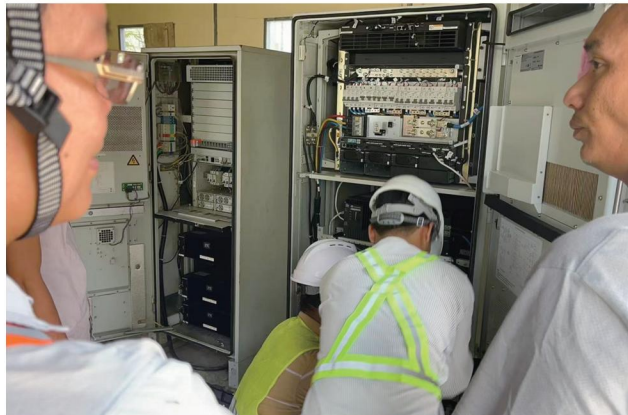
Energy Storage and Charging Station - 30MW 60MWh



Hospital-15MW30MWh



Stadium-15MW30MWh



ZTE and Huawei Base Station Battery - 48V 150Ah



Power Plant Frequency Modulation - 9MW 4.5MWh



Yangon Textile Factory, Myanmar - 5 High-Voltage Battery Units in Parallel



Myanmar Oilfield - Daytime Photovoltaic-Diesel Charging